



THE LUXURY TRAVELLING LOO COMPANY

Panelled Loo System Zeal

The Zeal range was originally commissioned for an exclusive sporting hospitality venue using IGLOOS previous experience with the flexible Panelled template.

The Panelled system uses laminated or veneer panels to build a room within a building or a structure creating a home from home bathroom. Clients may provide their own walling or select from IGLOOS range of colours.

- For the Zeal range the hand basins come in multiples of 2 or 3
- Elegant chrome wall mounted mixer taps
- Slipper shaped basins on a dark wood vanity unit
- The large mirrors shown create a room with depth
- Dark oak veneer cubicle doors match the vanity units enhanced with chrome plates and locks
- The flexibility of the system means that the exact number of cubicles, urinals and the hand basins can be selected depending on the nature of the event and number of guests
- The loo pans may operate on a vacuum system or fresh water flush

Installing temporary loos in a permanent building is a solution that is not often considered; yet it is possible and it can render otherwise unusable spaces as tenable options. For example, if loos are required in a basement for a party or on the first floor of a hotel for a conference, the IGLOOS® Panelled Loo System, provides the solution.

The Panelled Loo System is not only used exclusively for hospitality areas, it is also used to create general public areas. The materials chosen for the panels, the floor covering and the type of hand basin supplied very much determine the style of the room. See the product cards for **Roca Basins** and **General Public Area** for further details.

Individual disabled loo rooms can be built with appropriate fixtures such as grab rails, lever taps and an alarm. See the product card for Disabled Loo Room for more details.

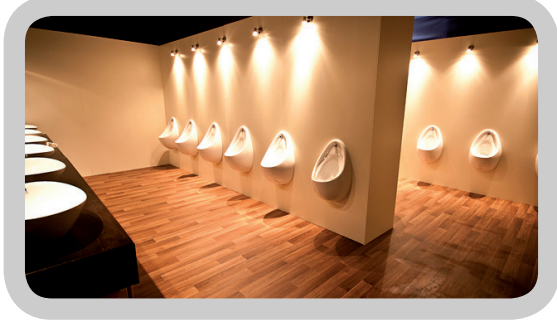
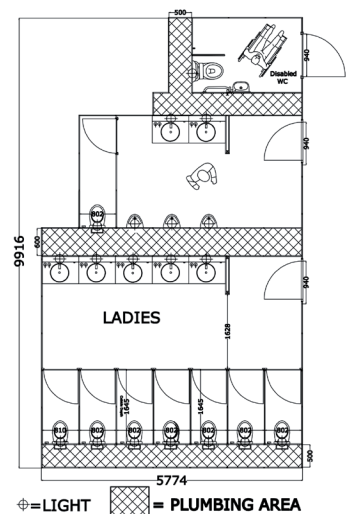
The various options available for this system can be discussed at the time of quotation.

Requirements for Operation

- The Panelled Loos need to be installed inside a building or structure
- Constant power supply is required for installation and during the event which varies according to the quantity of stock
- Constant fresh water supply with good pressure for installation and during the event
- The fresh water is necessary for both the hand basins and loo pans and occasionally the urinals if they are on a flushing system
- Waste is either collected in vacuum tanks or the system is plumbed into the mains drainage

Sample Layouts

The Panelled System is flexible in terms of layout and dimensions and can be built to specific requirements depending on capacity of events and venue.



...beautiful loos ...beautiful events